

Timothy W. Moseley UX/UI 3D

Varco International 3D Model & Screens for Touch Screen Drilling Chairs.

V.1 – Drillers Chair for Offshore Automation.

Software - 3D Studio Max

Inputs – Blueprints and STL files

Page 1 of 5



moseleydesign

Varco International 3D Model & Screens for Touch Screen Drilling Chairs.

V.1 – Drillers Chair for Offshore Automation.

Software - 3D Studio Max

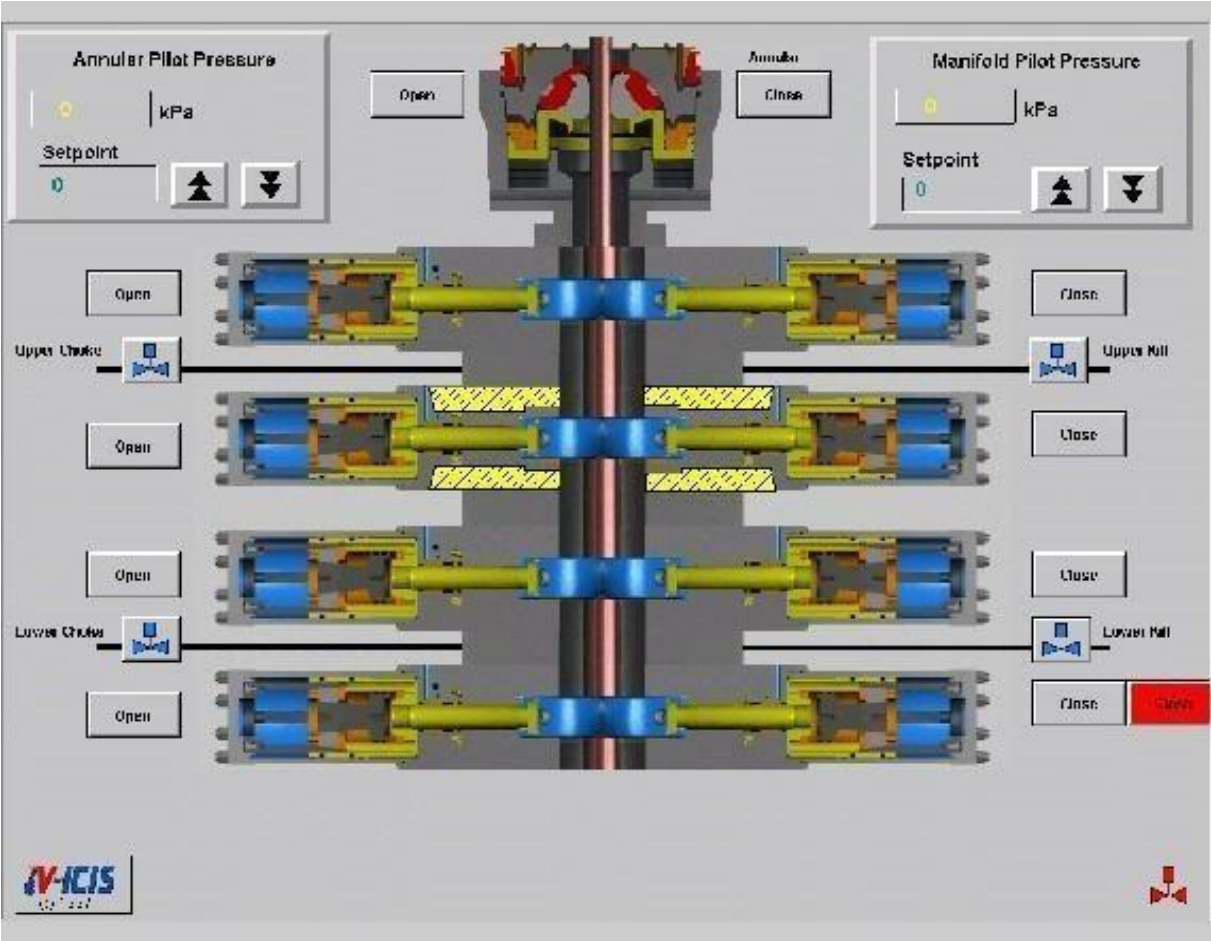
Inputs – Blueprints and STL files

Page 2 of 5



moseleydesign

Driller's screen of "BOP" – Blow Out Preventor.



Driller's screen of Iron Roughneck and Torque Gauge.

Page 4 of 5

The screenshot displays the driller's control interface for the Iron Roughneck and Torque Gauge. The interface is divided into several sections:

- Top Left:** Three 3D CAD models of the rig components, showing different views of the red and yellow machinery.
- Top Center:** A 3D model of the rig with the word "CLOSED" displayed below it.
- Top Right:** A torque gauge with a scale from 0 to 80,000. The needle is pointing to 58,505. Text on the gauge includes "AR3200 MAKE-UP TORQUE FT-LB", "M/D TOTCO INSTRUMENTATION", and "58505". Above the gauge, it says "MAX: 70000" and "ADJUST MAX TORQUE".
- Middle Left:** A "VIDEO" button and a "Return to PRS Detail" button.
- Middle Right:** A "START AUTO SEQUENCE" button.
- Bottom:** A status bar with the following indicators:
 - ARS3200 ON/OFF: OFF
 - TV MODE: NORMAL
 - TRIP MODE: OUT
 - JOINT HEIGHT: 8"
 - ARS3200: WELL CENTER

Drillers Screens Layout of 3D Drillers Chair.

Four touch screens. Screens are of BOP, Iron Roughneck, Fingerboard for drilling pipe, and Pump screen.

Page 5 of 5

